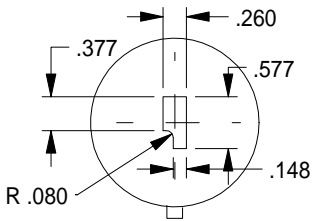


# SPECIALS

1-1/4

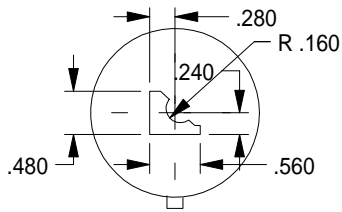


TOOL # S-9712 + .010  
USE ON JOB 4792

#-22

N-58

1-1/4

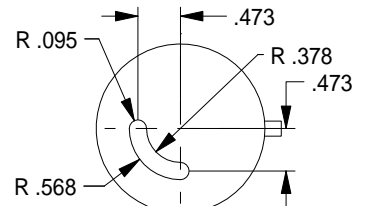


TOOL # S-9714 + .010  
USE ON JOB # 4797

#-23

N-58

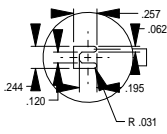
1-1/4



TOOL # 29-4087 +.008

N-56

1/2

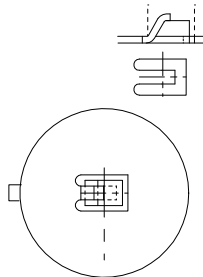


USED ON OMEGA 6000-00

TOOL # S-11427 +.004

K-51

1-1/4

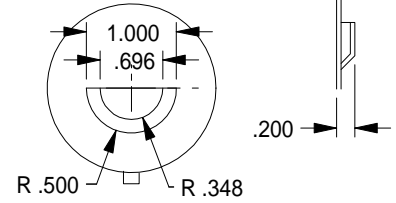


LANCE

S-11423

L-59

1-1/4



USED ON IN INC 4933-001

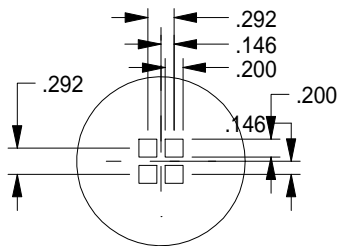
DIMPLE

S-10139

L-60

# SPECIALS

1-1/4

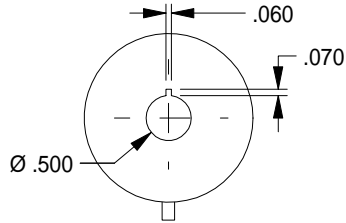


CLUSTER TOOL

TOOL # S-7106 +.009

**K-57**

1-1/4



TOOL # 38-0034 +.006  
+.012

**N-57**

1/2

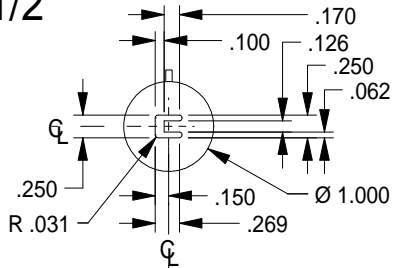


DIE

BOTTOM CENTER POINT

**K-42**

1/2

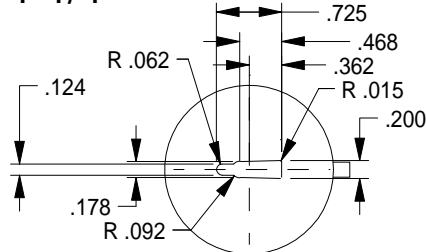


TOOL # S-6799 +.008

2 SETS

**K-31**

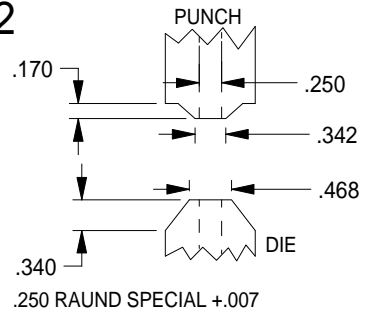
1-1/4



TOOL # 32-4897 +.011

**N-55**

1/2

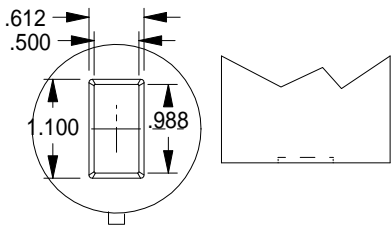


# S-8485

**L-28**

# SPECIALS

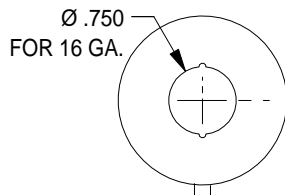
1-1/4



EMBOSS  
S-11070

L-60

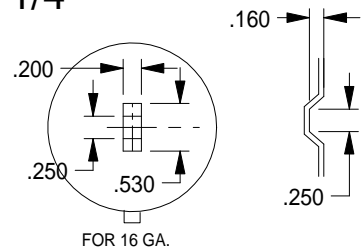
1-1/4



KNOCK OUT  
S-7867

L-61

1-1/4

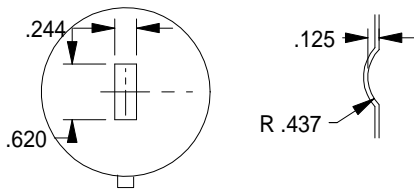


FOR 16 GA.

BRIDGE TOOL  
S-7081

L-59

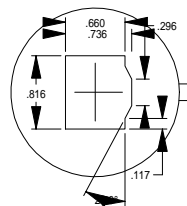
1-1/4



BRIDGE TOOL  
S-11058

L-62

1-1/4

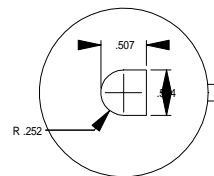


.006 CLEARANCE  
USED ON GCC 6258-00

S-11656

O-56

1-1/4



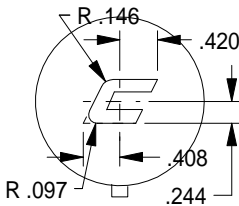
.006 CLEARANCE  
USED ON GCC 6258-00  
USED ON GCC 7498-00

S-11656A

O-56

# SPECIALS

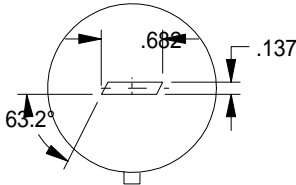
1-1/4



TOOL S-7875 B

L-42

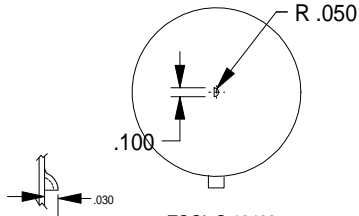
1-1/4



TOOL S-7875 C

L-41

1-1/4



TOOL S-12488  
USED ON CMS 7763-00

L-65

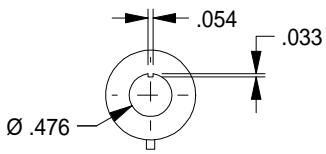
1-1/4

1-1/4

1-1/4

# SPECIALS

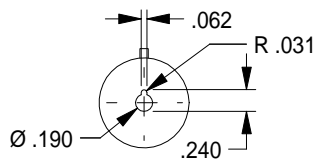
1/2



TOOL # 38-1458 + .006  
+ .012

**K-28**

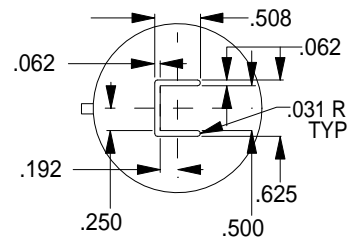
1/2



TOOL # 36-9529 + .006

**K-27**

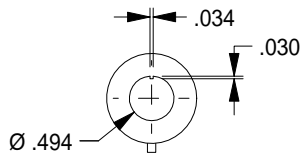
1-1/4



TOOL # S-5344 + .008

**M-38**

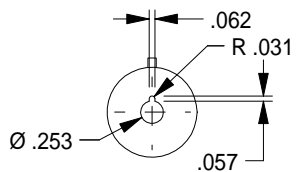
1/2



TOOL # 42-6158 + .012

**K-28**

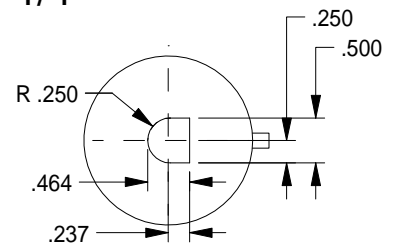
1/2



TOOL # 36-9527 + .006  
+ .012

**K-27**

1-1/4

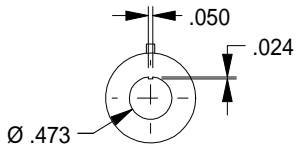


.464 X .500 .250 RADS +.011

**K-58**

# SPECIALS

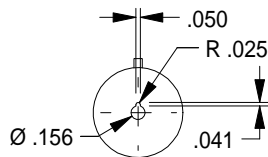
1/2



TOOL # 80888 +.008

**K-28**

1/2

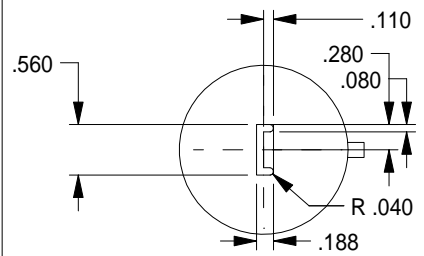


TOOL # 36-9530 +.012

+.006

**K-27**

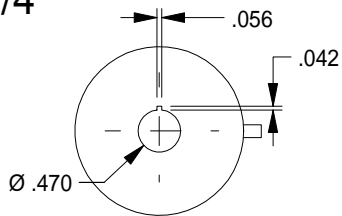
1-1/4



TOOL # S-5461 A +.009

**Q-35**

1-1/4

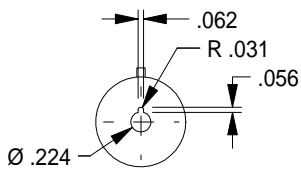


TOOL # 37-7413 +.012

+.006

**M-51**

1/2

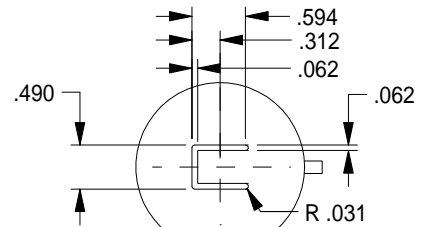


TOOL # 36-9528 +.012

+.006

**K-26**

1-1/4

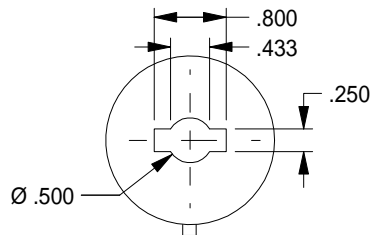


TOOL # S-6939 +.011

**Q-27**

# SPECIALS

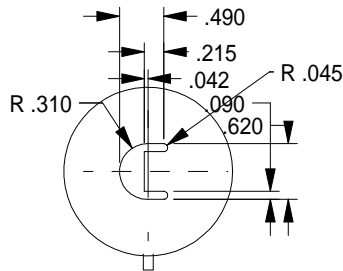
1-1/4



TOOL # S-6379-B + .040

**K-54**

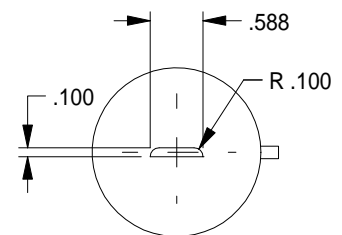
1-1/4



TOOL # S-6112 +.004

**Q-27**

1-1/4

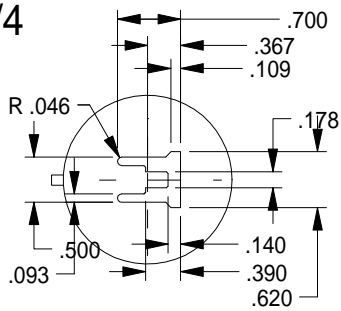


.100 X .588 W/2 .100 RADS. +.011

TOOL # S-7081

**Q-26**

1-1/4

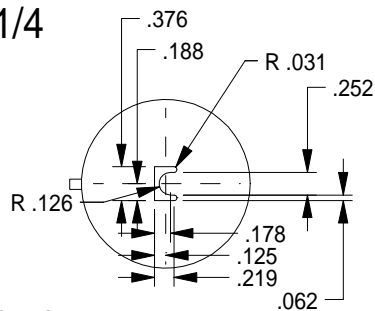


TOOL # S-5435 +.009

**#-26**

**Q-30**

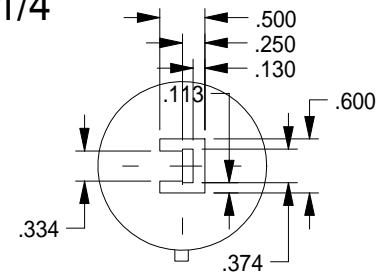
1-1/4



TOOL # S-9117 + .006

**M-34**

1-1/4

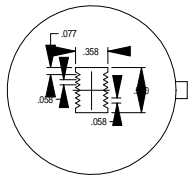


TOOL # S-7642 +.008

**Q-26**

# SPECIALS

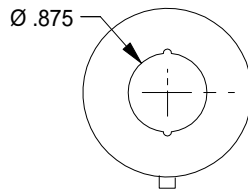
1-1/4



S11620  
USE ON HIPER 5946-00

**O-55**

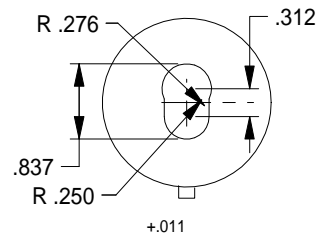
1-1/4



KNOCK OUT  
S-6655

**L-64**

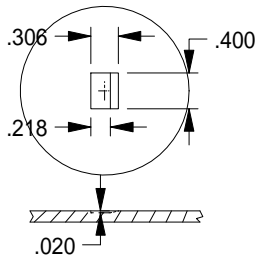
1-1/4



S-12072

**O-55**

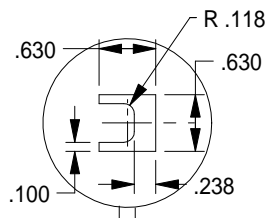
1-1/4



S-5467

**L-65**

1-1/4

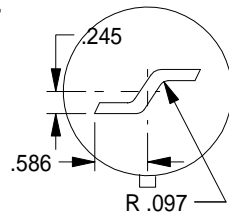


USED ON SONY 6710-00

TOOL # S-12226 +.008

**P-51**

1-1/4



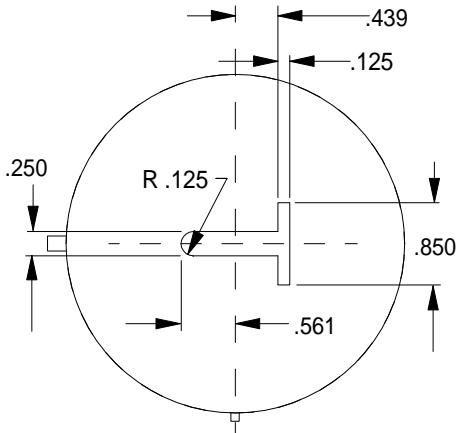
TOOL S-7875 A

**L-42**



# SPECIALS

2"

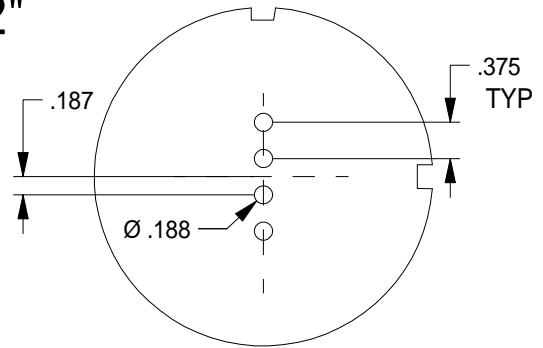


TOOL # S-6491-B +.004

#-12

C-29

2"

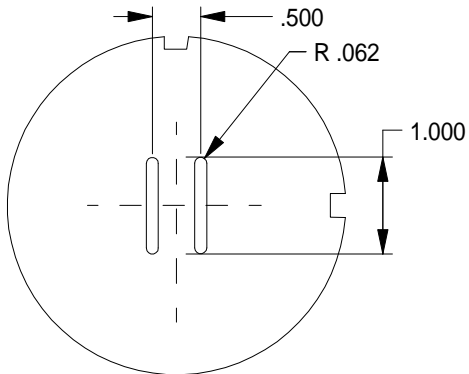


TOOL # 27-23621 + .011

#-16

C-45

2"

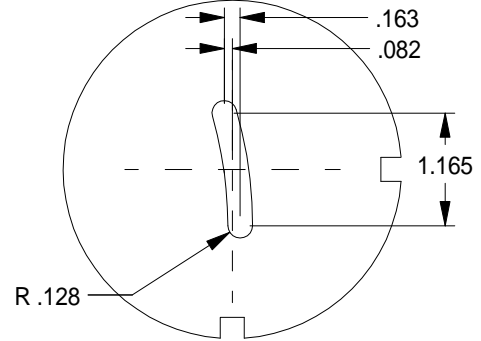


TOOL # S-5308 + .011

#-27

C-41

2"



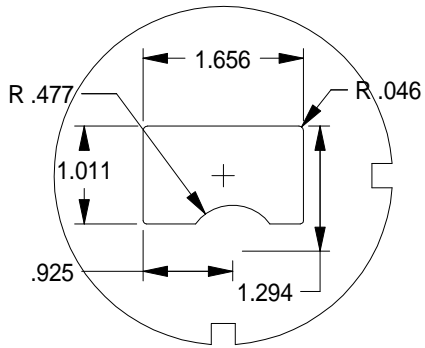
TOOL # S-9640-A + .011

#-24

C-44

# SPECIALS

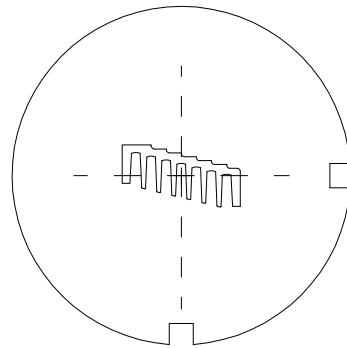
2"



TOOL # S-10750-A  
SEE JOB 5128-00

A-39

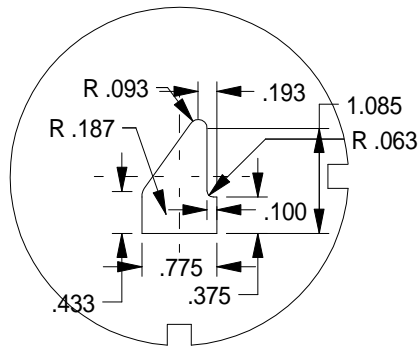
2"



TOOL # S-10750-B  
SEE JOB 5128-00

A-40

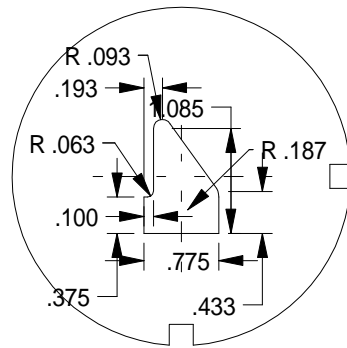
2"



TOOL # S-11411 A  
SEE JOB 5950-01

A-42

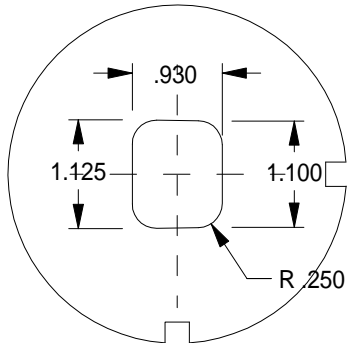
2"



TOOL # S-11411 B  
SEE JOB 5950-01

A-43

2"

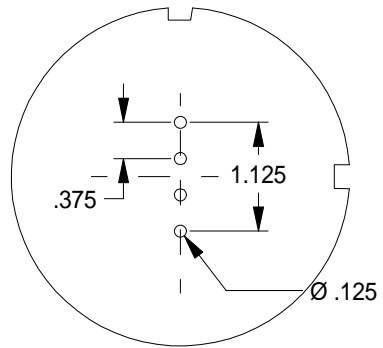


TOOL # S-11195  
SEE JOB SMA 6826-00

PROPERTY OF SMA

A-47

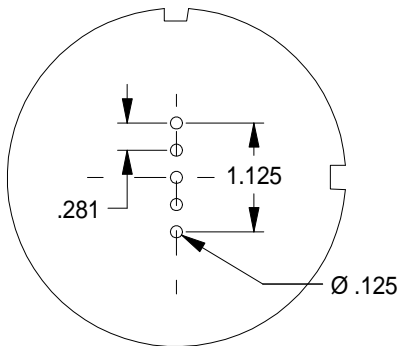
2"



TOOL 46-0942  
.010 CLEARANCE

C-23

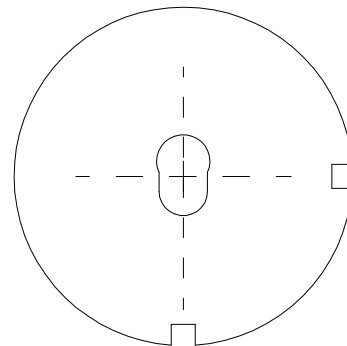
2"



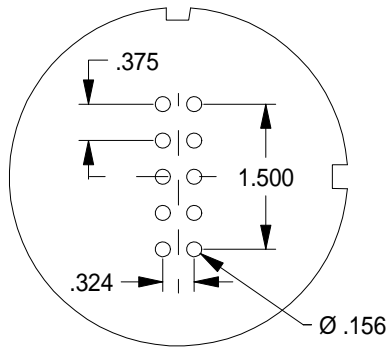
TOOL 24-42134  
.011 CLEARNACE

C-22

2"



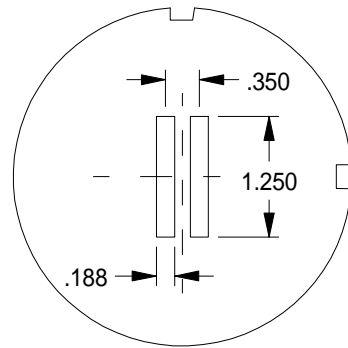
2"



TOOL S-7395  
.011 CLEARANCE

C-15

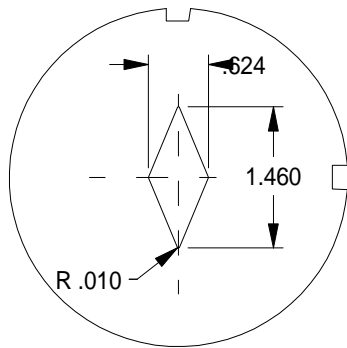
2"



TOOL 47530  
.188X1.250  
.011 CLEARANCE

C-13

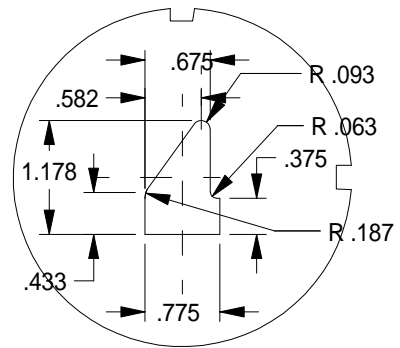
2"



TOOL S-2575  
.006 CLEARANCE

B-35

2"

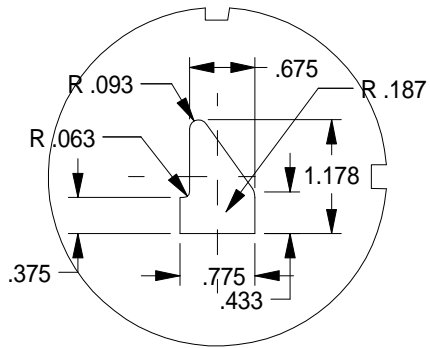


TOOL S-11411A  
.025 CLEARANCE

USED ON 3950-05

A-43

2"



TOOL S-11411B  
.025 CLEARANCE

USED ON 3950-05

A-42

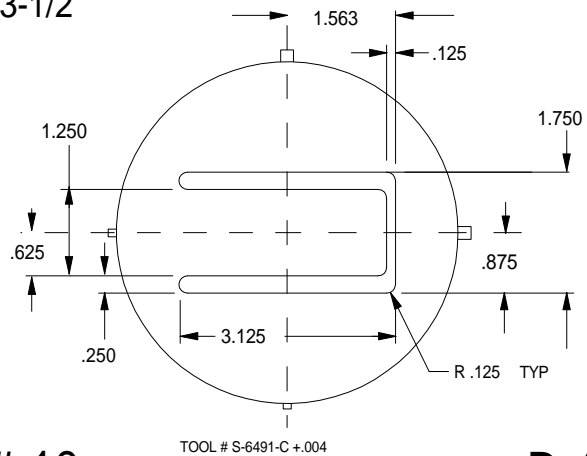
2"

2"

2"

# SPECIALS

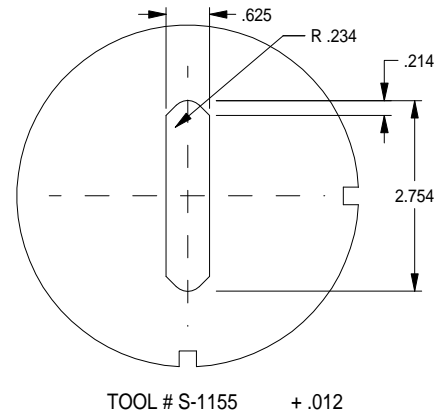
3-1/2



#-10

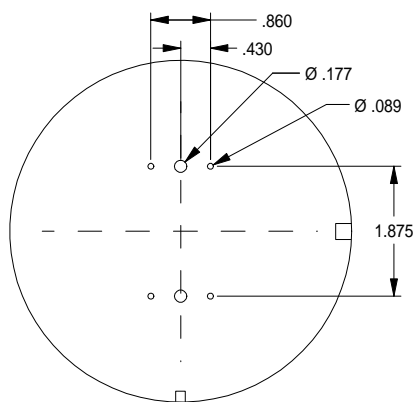
D-4

3-1/2



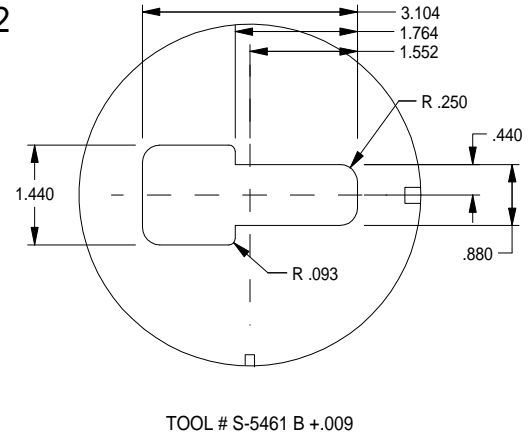
D-29

3-1/2



D-28

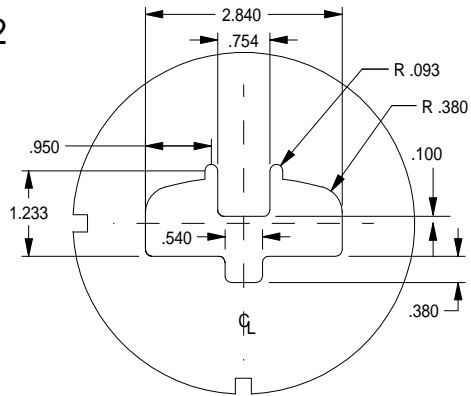
3-1/2



D-27

## SPECIALS

3-1/2

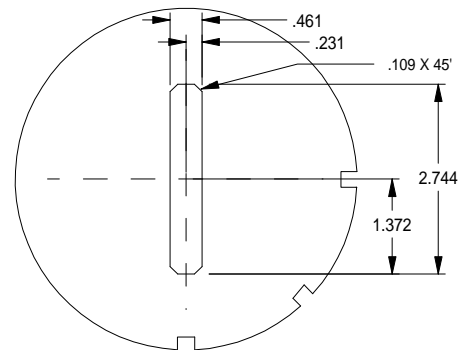


TOOL # S-9766 A + .004

USE ON JOB # 4855

D-30

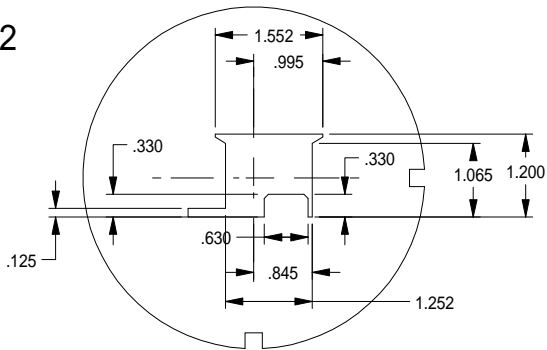
3-1/2



.461 X 2.744 +.011 .109X45 CHAMFERS

E-1

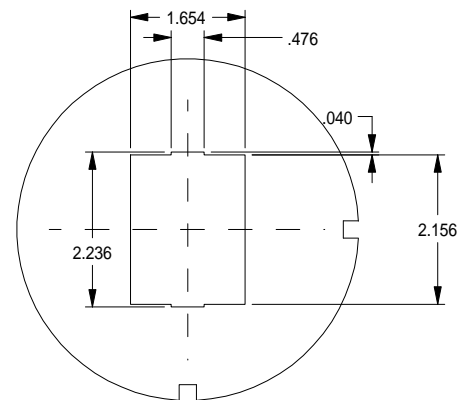
3-1/2



TOOL #S-9933  
USED ON 4792-00

E-28

3-1/2



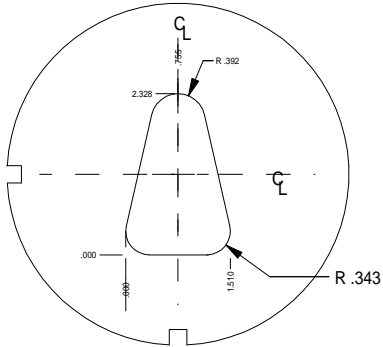
TOOL # S-6409

#-28

E-30

## SPECIALS

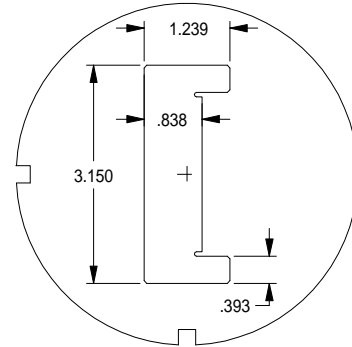
3-1/2



TOOL # S-10503

D-37

3-1/2

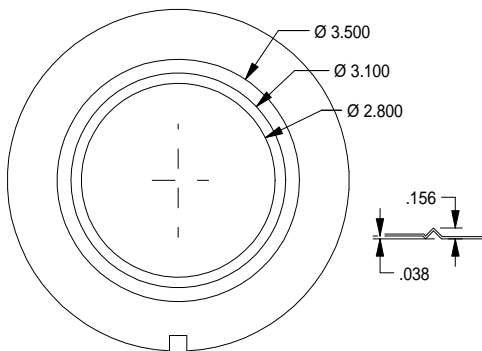


S-12294

USED ON XEROX 7484-00

D-39

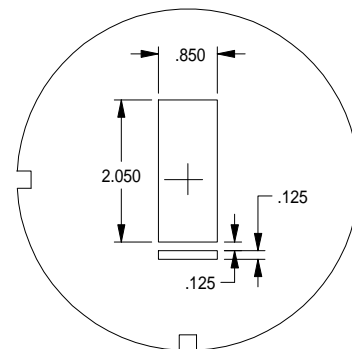
3-1/2



TOOL # S-9938

D-31

3-1/2



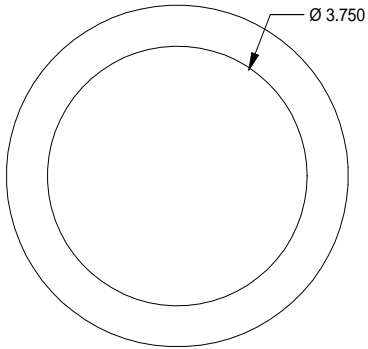
TOOL S-12330  
.012 CLEARANCE  
USED ON REVEL 6853-00  
CLUSTER PUNCH

E-39



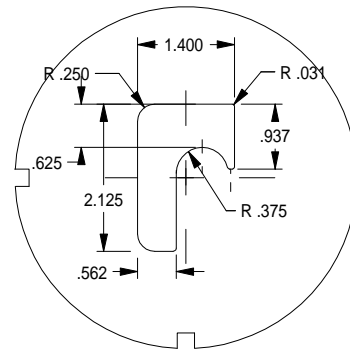
# SPECIALS

3-1/2



TO BE USE WITH TOOL S-9938 ONLY  
.005 CLEARANCE

3-1/2



TOOL S-6706  
.011 CLEARANCE

USED ON LA MARINA 4313-00  
SANTA INEZ

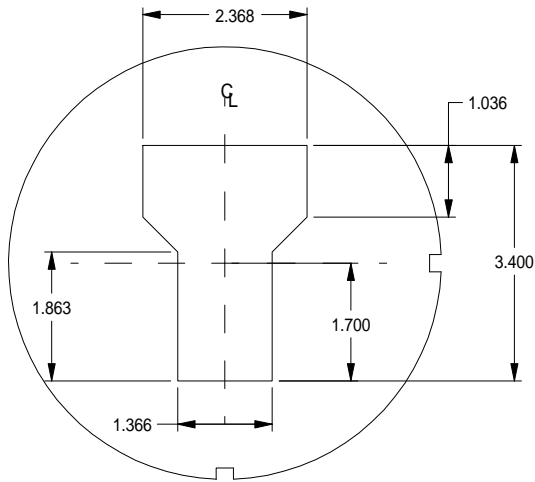
F-14

3-1/2

3-1/2

# SPECIALS

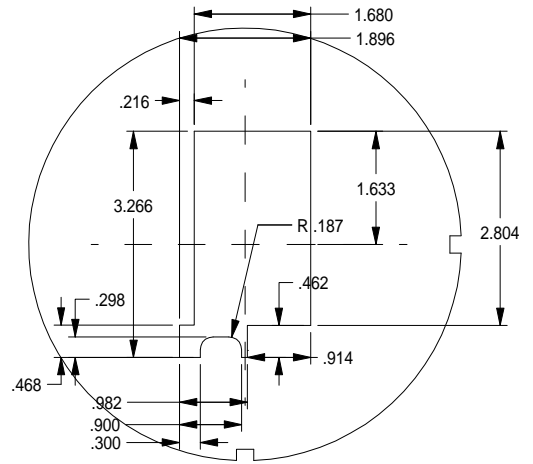
4-1/2



TOOL # S-4215

**G-23**

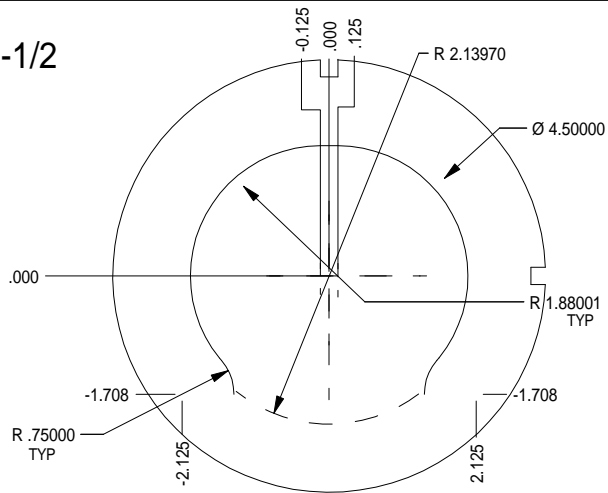
4-1/2



TOOL # S-5284

**G-25**

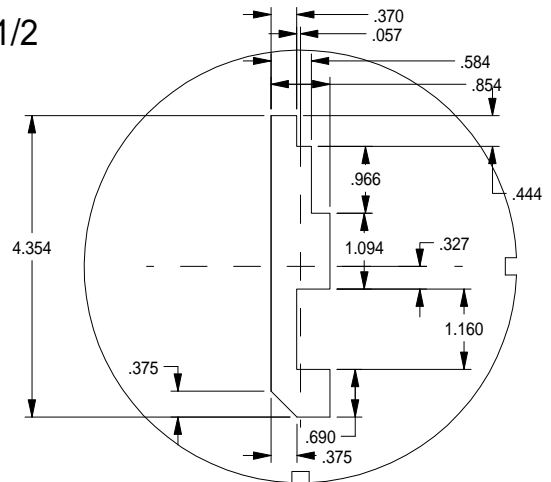
4-1/2



TOOL # S-9766 B +.008  
USE ON JOB # 4797

**G-21**

4-1/2

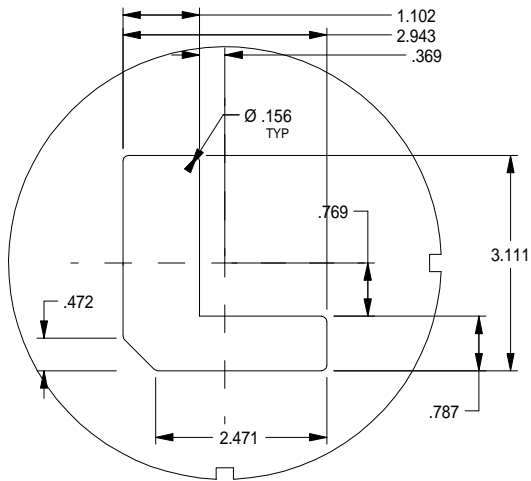


TOOL # S-5292

**G-24**

# SPECIALS

4-1/2



#-25

TOOL # S-9640-B

G-22

4-1/2

4-1/2

4-1/2